

ISLINGTON ART SOCIETY

MEMBERS

Sue Boyd

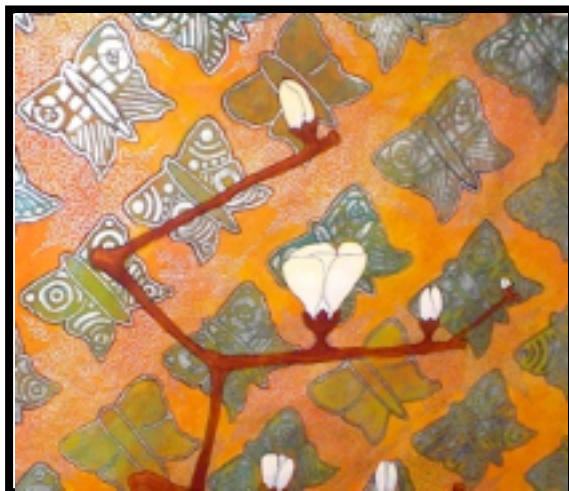
Although originally from Tyneside in the north east of England, I have lived in Islington for almost 34 years.

I've been drawing, painting and making things for as long as I can remember,

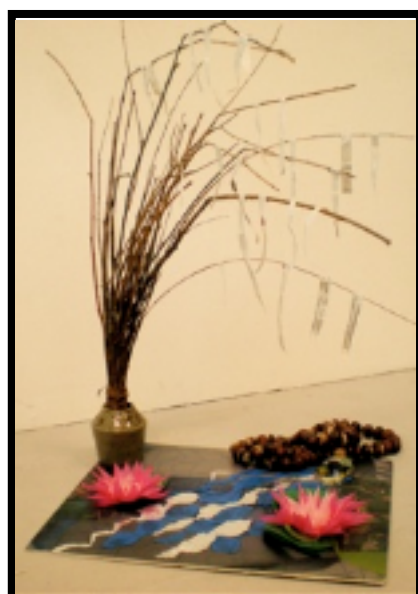
I attended several adult institute courses in painting and drawing at different locations in Islington during the 1980s when my children were young and, more recently, night classes in life drawing at Camden's Working Men's College.

I worked as a Playworker and Co-ordinator at an art-based playcentre in Stoke Newington for several years, before moving to a charity-based training provider, teaching vocational skills to disadvantaged young adults.

However, I am currently studying at Chelsea College of Art and Design and having the time of my life!

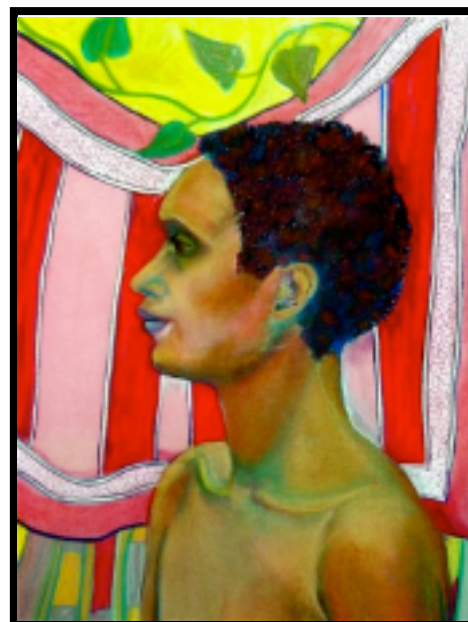


above
The Butterfly Effect (detail):
Mixed media on handmade paper,
97cms x 70cms,



left
Triptych Installation

below
Ruby (detail)
Chalk pastel on pink paper
100cms x 76cms



**Use the back arrow
of your browser
to return to
List of Members.**